

PROJECT PREPARATION TRUST

25 YEAR ACHIEVEMENTS

PPT

Project Preparation Trust

Est. 1993



December 2017



national treasury
Department:
National Treasury
REPUBLIC OF SOUTH AFRICA



human settlements
Department:
Human Settlements
REPUBLIC OF SOUTH AFRICA



NUSP
National Upgrading Support Programme



UMZINYATHI
UMASIPALA WESIFUNDA
DISTRICT MUNICIPALITY



NDA
National
Development
Agency



**UN
DP**



PSPPD
PROGRAMME TO
SUPPORT PRO-POOR
POLICY DEVELOPMENT



human settlements
Department:
Human Settlements
PROVINCE OF KWAZULU-NATAL



HDA
HOUSING DEVELOPMENT AGENCY
an agency of the Department of Human Settlements



NEWLANDS MASHU
Permaculture Learning Centre



**small business
development**
Department:
Small Business Development
REPUBLIC OF SOUTH AFRICA



**planning, monitoring
and evaluation**
Department:
Planning, Monitoring and Evaluation
REPUBLIC OF SOUTH AFRICA



edtea
Department:
Economic Development, Tourism and
Environmental Affairs
PROVINCE OF KWAZULU-NATAL



USAID
FROM THE AMERICAN PEOPLE



social development
Department:
Social Development
REPUBLIC OF SOUTH AFRICA



Umzumbe
MUNICIPALITY



UMDONI MUNICIPALITY
UMASIPALA WASEDONI



Ugu District Municipality



gijima KZN
TOGETHER, ACCELERATING LOCAL ECONOMIC DEVELOPMENT



ilifa
labantwana



tree
Young Children, Our Future



**ANGLO
AMERICAN**



WORLD BANK GROUP



DUT
DURBAN
UNIVERSITY OF
TECHNOLOGY



Msinga
Local Municipality



NLC
NATIONAL LOTTERIES COMMISSION
LOTTO FUNDED



NEDBANK



NAG
NETWORK ACTION GROUP



PACE
Credible Carbon Solutions in Africa



Leeds
CITY COUNCIL



Schweizerische Eidgenossenschaft
Confédération suisse
Confederazione Svizzera
Confederaziun svizra



ASSUPOL
SERVING THOSE WHO SERVE SINCE 1913



**UNIVERSITY OF
KWAZULU-NATAL**
INYUVESI
YAKWAZULU-NATALI

DGMT
THE DG MURRAY TRUST

Bundesamt für Energie BFE
Swiss Federal Office of Energy SFOE



Establishment, Vision and Mission

Establishment: PPT established 1993. Registered Trust. Registered NPO.

Organisational Statement: 'Working to change the lives of the poor through appropriate and sustainable development.'

PPT's Vision: PPT's Vision is a society in which all citizens of South Africa have equitable access to basic services and economic opportunities, and where there is normalization of the spatial and economic environments.

PPT's Mission: PPT's Mission is to enable sustainable socio-economic and built environment development for the benefit of disadvantaged and vulnerable communities including those in special need. PPT achieves this mainly through:

- Undertaking a range of prioritised and sustainable developmental programmes.
- Providing project preparation support and expertise to communities, funders, all spheres of government, and other development stakeholders.
- Obtaining and managing funding for project preparation and other PPT programmes.
- Unlocking capital and other resources for project implementation.
- Promoting and mainstreaming good methodologies and practices including those relating to: project preparation, inclusion of the poor, participation, and integrated and sustainable development.



PPT's Initial Focus

- **Preparation methods and tools:** PPT developed, refined and substantially mainstreamed the methods and tools for project preparation across multiple project types (housing, informal settlement upgrading, special needs housing etc.). For example, the KZN DHS's first preparation guidelines were directly modelled on those of PPT's. PPT trained KZN Human Settlements personnel in housing preparation over three years as part of consortium.
- **Preparing projects:** PPT successfully prepared large numbers of developmental projects which benefit poor and vulnerable people. To date, the projects PPT has prepared have resulted in R1.89 billion in capital funding being leveraged for over 211,000 disadvantaged households in 181 pro-poor development projects.

PPT Developmental Programmes

Core programmes:

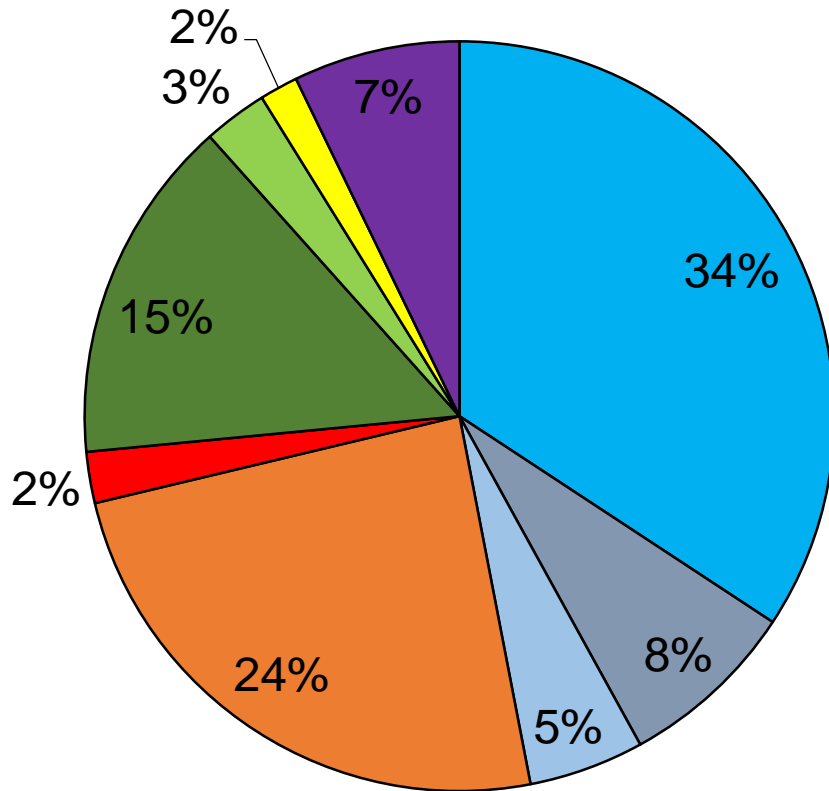
- Informal settlement upgrading
- Special Needs Housing
- Early Childhood Development (survey and infrastructure support)
- Informal Economy Support Programme (IESP)
- Policy and strategy work related to the above

Additional programmes:

- Municipal infrastructure (Ukulungisa)
- Fruit tree establishment and homestead gardens
- Training and skills transfer
- Land reform

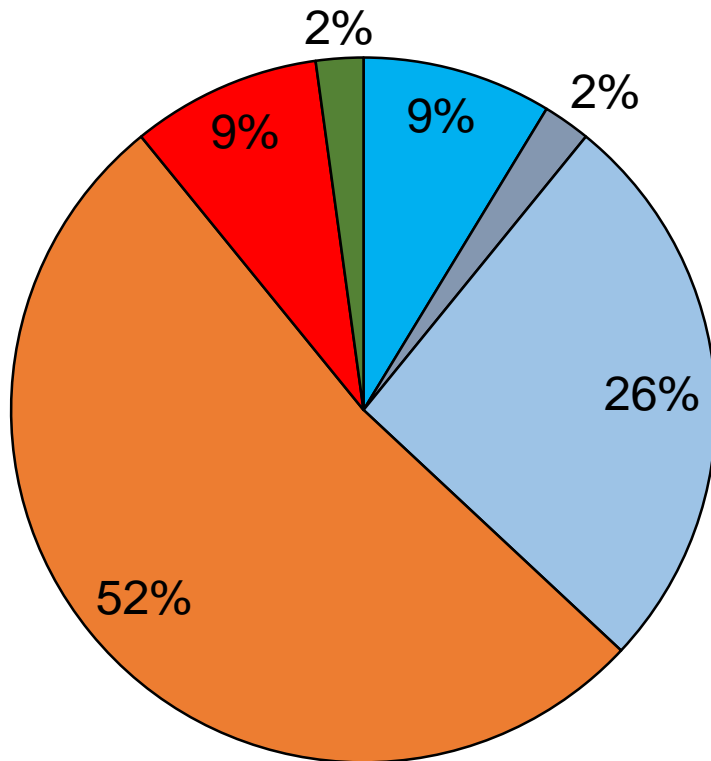


Funding leveraged by number of projects (R189 Billion leveraged benefitting 211,261 disadvantaged households in 181 projects)



- Informal Settlement Upgrading (incl infrastructure & housing)
- Greenfields Housing(& Infrastructure)
- Municipal infrastructure - other
- Special Needs Housing
- ECD Survey & Infrastructure
- Informal Economy & LED
- Land Reform
- Sustainable energy
- Skills transfer & capacity building

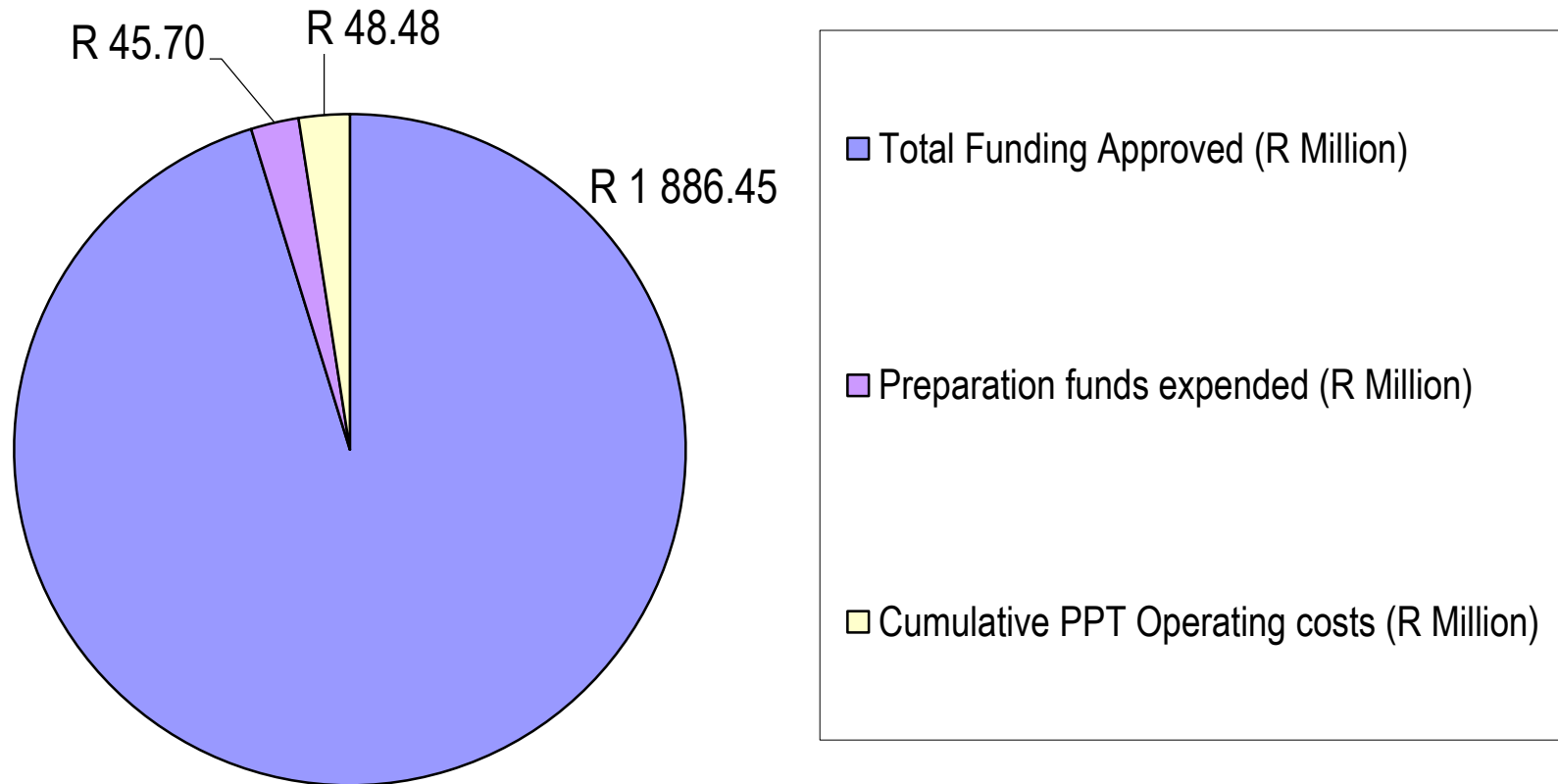
Breakdown by number of projects under preparation 46 projects benefiting 50,0899 disadvantaged households (capital value of R701 million)



- Informal Settlement Upgrading (incl infrastructure & housing)
- Greenfields Housing(& Infrastructure)
- Municipal infrastructure - other
- Special Needs Housing
- ECD Survey & Infrastructure
- Informal Economy & LED

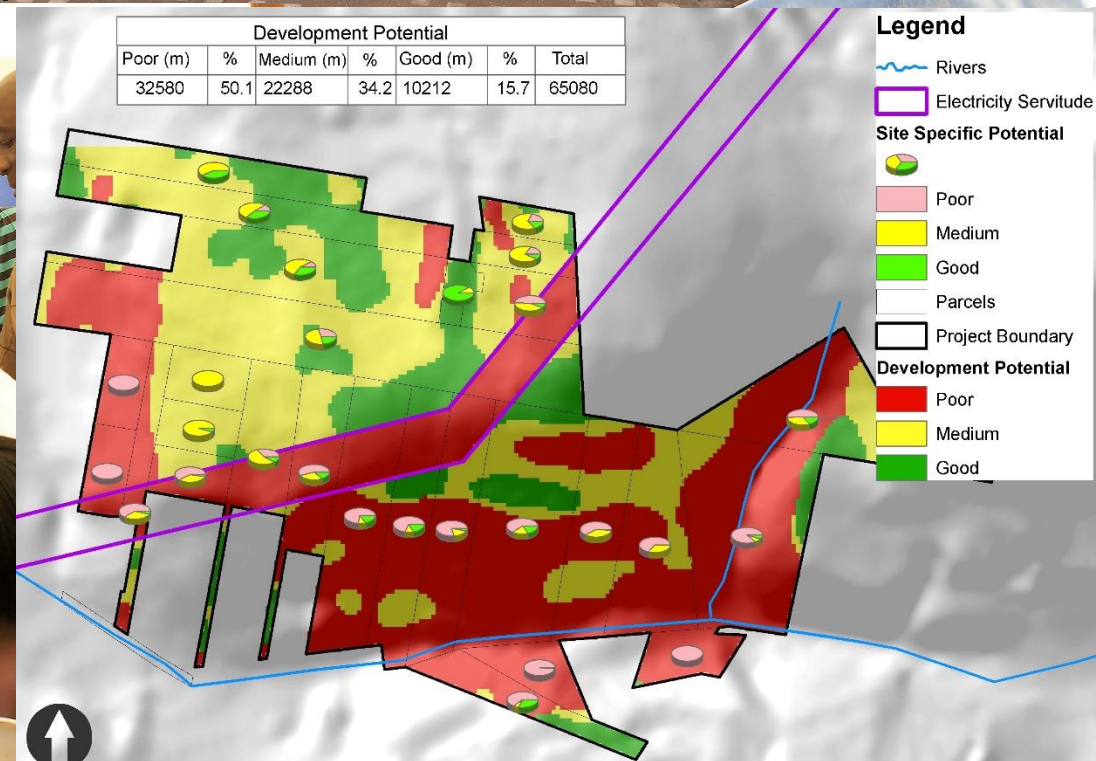
Gearing 1995 - 2017

On PPT's operating costs 1:39
On preparation funding expended 1:41



Informal Settlement Upgrading

- PPT is one of small number of support NGOs working in upgrading and only remaining one in KZN (aside from CORC & limited BESG role).
- Success preparation track record:
 - 83 projects, 199,699hh, R1.7 Billion
 - + 17 projects under preparation (65,717hh, R606million)
- Leading role in developing and mainstreaming the incremental, programmatic upgrading - led with essential services provision and not premised on formalisation. Incremental tenure, administrative recognition as the first 'scale-able' step.
- Development of Rapid Assessment & Categorisation methodology (now core national organising tool for upgrading).
- Multiple strategy and policy pieces for metro, provincial and national sphere e.g.
 - Metro upgrading toolkit for CSP.
 - Design/setup of eThekweni incremental services programme.
 - KZN Upgrading Strategy (1st of its kind in SA).
 - KZN rapid assessments for 10 municipalities.



Special Needs Housing

- PPT has played a leading role in respect of SNH in KZN and South Africa. Only support NGO specialising in this space.
- Prepared the first projects in KZN and developed the method and helped develop and refine the initial policy framework (and preparation method) with KZN DHS.
- PPT has prepared the bulk of SNH projects in SA (KZN, EC, Gauteng, WC).
 - 47 projects prepared benefiting 1,059 persons (R66m capital leveraged)
 - 24 projects under preparation benefiting 487 persons (R47m capital value)
- Developed national SNH policy for and with NDHS and NDSD 2015). First policy of its kind in SA (developed by two national Departments and a support NGO). Adoption and implementation pending.
- Significant role in civil society lobby for SNH over more than ten years. PPT is the only support organisations which specialises in preparing SNH projects in the country.



Opening Gilead House , Gauteng



Leyds House, Gauteng



Baby Shelter, Port Elizabeth

Foster care home, Alexandria EC

Informal Economy and MIE support

- PPT is one of the first organisations to go into this space and try to develop workable and programmatic response methods.
- Developed PEAP method and succeeded with some mainstreaming.
- Developed IESP and MIE support tools and methods.
- Successful pilot phase of IESP (2013-2016) – 217 new permanent jobs created, new capacity and methods developed, 27 MIEs supported, database of more than 480 MIEs with potential for 720 new jobs.
- IESP is the first initiative of its kind in S.A.
- Next phase of IESP awaiting decision from Jobs Fund (collaboration with Dept. Small Business Development and eThekweni) – R20m initiative which will create more than 1,000 new permanent jobs within 41 selected MIEs.
- PPT recognised as the only organisation extending BDS type support to MIEs in the informal economy space.

PARTICIPATIVE SETTLEMENT PLANNING



MICRO-ENTERPRISE AND INFORMAL ECONOMY – A KEY DRIVER OF EMPLOYMENT, LIVELIHOODS AND A MORE INCLUSIVE ECONOMY



Early Childhood Development (ECD)

- PPT has played a leading role in identifying and creating awareness of importance of ECD in informal settlements and significant supportive role w.r.t. underserviced rural communities.
- Leading role in developing an incremental, flexible and inclusive approach – focused on supporting, including and improving large numbers of less formal, unregistered centres.
- Developed new tools and methods including: Categorisation framework. Survey tool. Infrastructure improvement model and assessment methods.
- ECD surveys at scale in KZN. More than 500 centres. Surveyed in 6 municipalities providing comprehensive dataset for first time (including many centres previously unknown).
- Support to national government with new framework for incremental registration.
- PPT is the only support organisation with specialisation in ECD survey and infrastructure support.

ESSENTIAL SOCIAL SERVICES EXAMPLE – EARLY CHILDHOOD DEVELOPMENT – SUPPORT & IMPROVEMENTS TO EXISTING NPO-OPERATED ECD CENTRES IS A KEY PRIORITY. INFRASTRUCTURE IMPROVEMENTS CAN UNLOCK REGISTRATION WITH DSD & ACCESS TO DSD GRANTS AND OVERSIGHT



Policy and Strategy

- **Programme Management Upgrading Toolkit for Metros in South Africa** for Cities Support Programme / National Treasury / National Upgrading Support Programme 2017;
- Development of a **National Special Needs Group Housing Policy** for the National Department of Human Settlement in close collaboration with the National Department of Social Development in 2014 (policy finalised but not yet adopted);
- **'Rethink' of the National Housing Programme** for the National Department of Human Settlements (Policy Directorate) 2010 – currently underway;
- Development of the **Informal Settlement Strategy for the KZN Department of Human Settlements** (KZN DHS) in 2011,
- Development of a **Position Paper on Informal Settlement Upgrading for the Office of the Presidency in 2007** as part of a Second Economy Strategy;
- Co-development of **KZN DHS' Sustainable Human Settlement Strategy** in 2009/10 (leading the task team on land and property markets),

Policy and Strategy

- Development of ***KZN DHS Implementation Guidelines for Rural Housing (2003)***
- Development of ***KZN DHS Housing Sector Plan Guidelines (2005)***;
- Support to the Development Action Group in developing ***Emergency Housing Guidelines for the Housing Development Agency (2011)***;
- Participation in ***PHP Reference Group (2010)***, task team leader on financial model and Commission Chair at PHP National Conference (2010);
- Advisory support to eThekweni Municipality in the development and rollout of its ground-breaking large scale ***Interim Services Programme*** targeting over 77,000 households residing in 166 informal settlements;
- Development of the ***original housing project preparation guidelines*** in 1997 which formed the basis for the KZN DHS facilitation guidelines and related funding.
- ***Inputs into National Development Plan*** including participations at a working sessions for Chapter 8 pertaining to Human Settlements.

Some other achievements

- **Training and capacity building:** 1823 persons trained in 16 projects
- **Tree establishment:** 20,765 fruit and indigenous trees established benefitting 6,692 households
- **Sustainable energy products:** 23 solar water heaters, 94 gel fuel stoves, 35 PV solar (65w), 14 solar cookers, 1 wind generator (150w), 94 hot bags, 996 compact fluorescent lights, 525 wood stoves, 101 home solar kits
- **Audits:** Clean audits every year since establishment in 1993.
- **Contract and funding management:** More than 33 major development contracts successfully managed (more than 68 million) for donor, government and corporate partners/clients, spanning all programme focus areas. Clean audit history.

Our future

- Commitment to working with communities, government, and other organizations to complete the mission of a transformed, more equitable and more inclusive South Africa. Much work still remains to be done.
- Take our niche programmes to the point of mainstreaming and scaling up. Explore new niches where the need arises.
- Secure further funding and strengthen and our own financial sustainability so we can continue to add value.
- Strengthen collaboration and partnership arrangements with government. Support NGOs such as PPT already play a significant role in supporting government and it is important that this is further optimized.